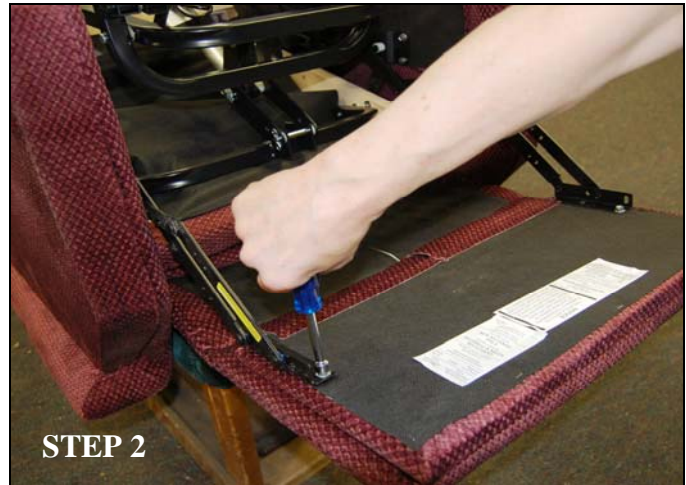
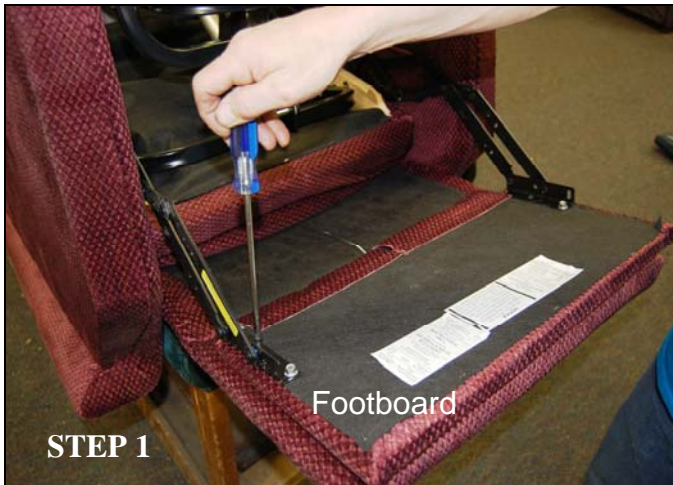


# Foot Rest Extension Installation Instructions

**Models:** 401SME, 401MLA, 747, 722, 451, 756MC, 756L, 508M, 505JP, 505S, 505M, 505L, 501S, 501M, 501L, 501T, 501S23, 501M-26D, 501L-26D, 501T-28D, 752, 508L, 359M, 359L

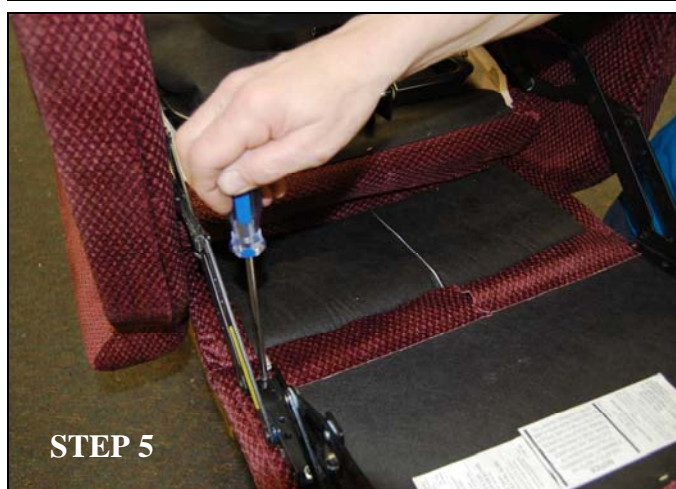
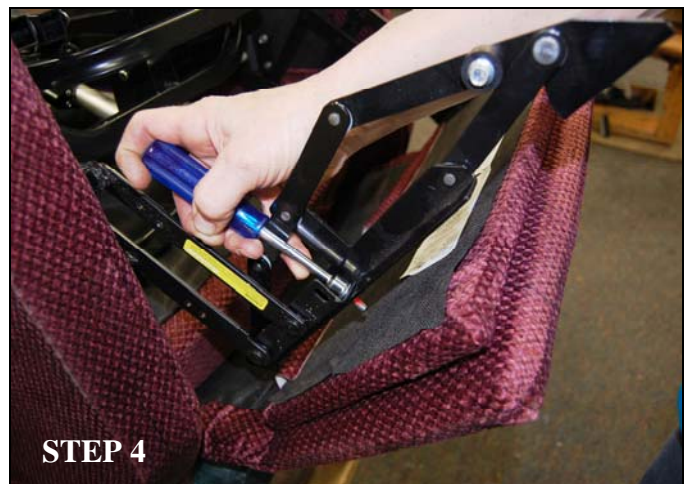
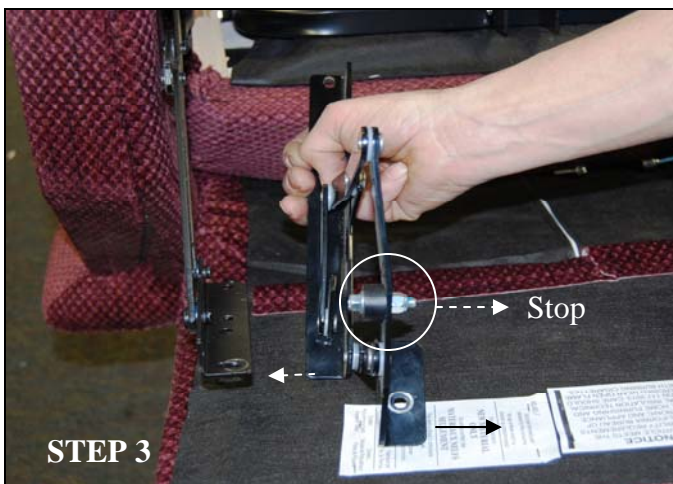
**Kit Includes:** Quantity (1) extension board, (2) brackets, (4) 1/4-20 x 1" bolts, (4) 1/4-20 x 1 1/2" bolts, (2) large black front stoppers, (4) small black spacers, (6) lock nuts, (2) wood screws

**Tools Required:** Phillips screwdriver, 3/8 socket, and 7/16 wrench



STEP 1 – Open footboard and remove Phillips head screw from one side of footboard.

STEP 2 – Remove hex head bolt from the same side of the footboard. Repeat steps 1 and 2 for opposite side.

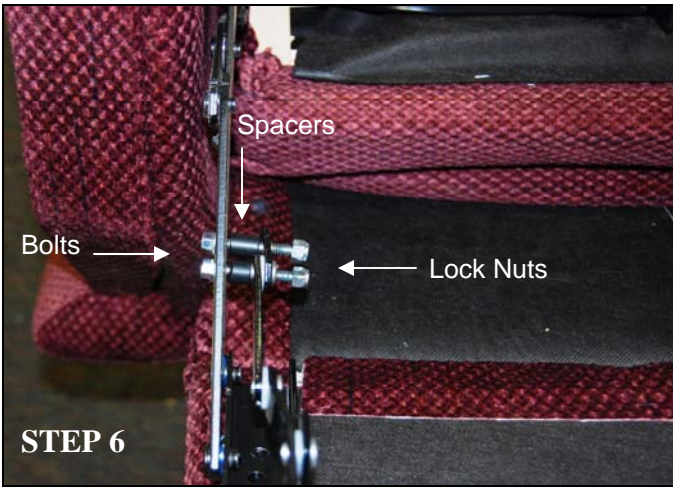


STEP 3 – Remove (1) bracket, 1" bolt, large stopper, and lock nut from the kit and install as a stop as shown. Make sure the bracket is positioned between the footboard and scissor mechanism.

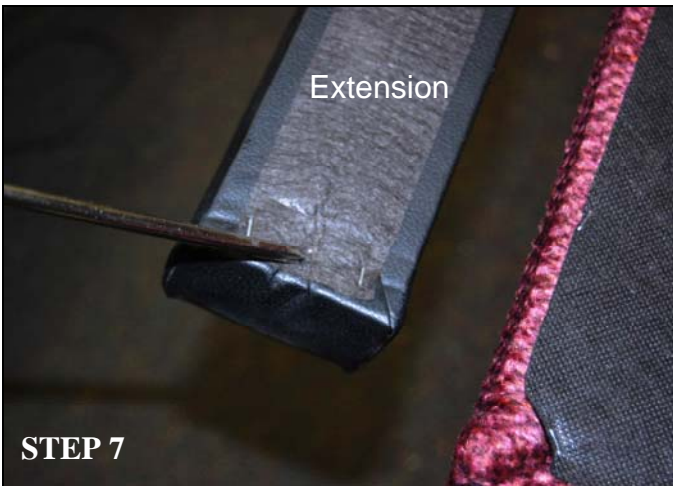
STEP 4 – Install (1) bolt removed in step 2 through the bracket, scissor mechanism, and into the footboard as shown.

STEP 5 – Install (1) Phillips head screw removed in step 1 through the end hole of the bracket, scissor mechanism, and into the footboard as shown. Repeat steps 3 – 5 for the opposite side of the footboard.

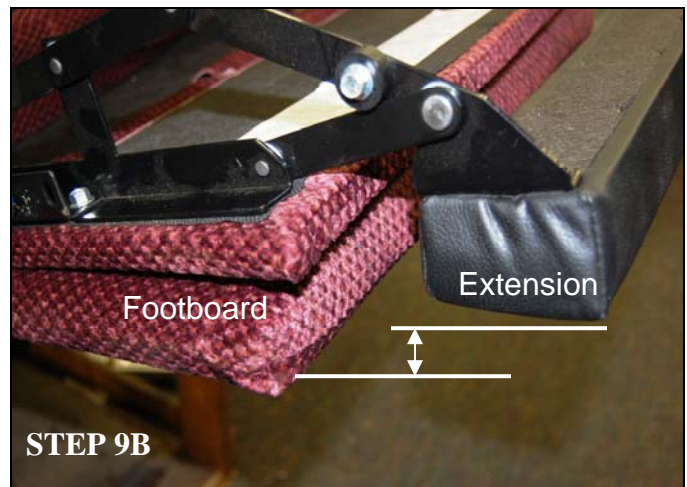




STEP 6 – Remove (2) 1 1/2” bolts, small spacers, and lock nuts from the kit. Insert each bolt through the scissor mechanism. Place a spacer on each bolt, align the holes in the bracket and insert the bolts. Place a lock nut on each bolt and tighten to secure. See figure 6B for completed assembly. Repeat for opposite side.



STEP 7 – Locate t-nut under tybar on one side of the extension board and poke a hole through the tybar. Repeat for opposite side. **NOTICE** Ensure nap direction on cloth fabrics by rubbing across the fabric on both pieces.  
 STEP 8 – Remove (2) 1” bolts from the kit. Insert one bolt through the bracket and into the extension board. Align extension board and bracket square and tighten to secure. Repeat for opposite side.



STEP 9 and 9B – Close and open the footboard to check for proper function. **NOTICE** Footboard and extension board are not level. The extension sits slightly lower when installed properly. See figure 9B.